

# TRUMPF TOOLING

# CONTENTS

**MULTI  
TOOLS**

**CARTRIDGE  
&  
ACCESSORIES**

**MACHINE  
GROUPS**

**FULLY GUIDE  
SIZE 5 TOOLING  
FLAWLESS  
WHEEL TOOLS**

**FORMING  
TOOLS**

**RP-SERIES  
QUICK SET  
PU SLITTING  
TOOLS**

**SHEET METAL  
ACCESORIES**

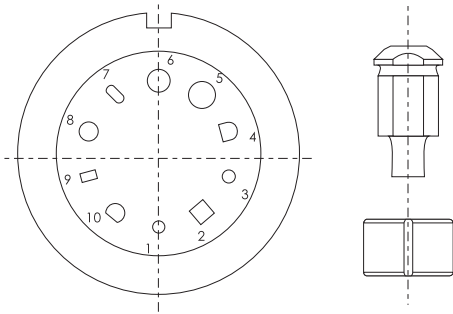
**PUNCH  
DIE  
STRIPPER  
HEAVY DUTY**

**SHAPE  
CLASSES**



## MULTI TOOL

# Multi-tool 10 STATION

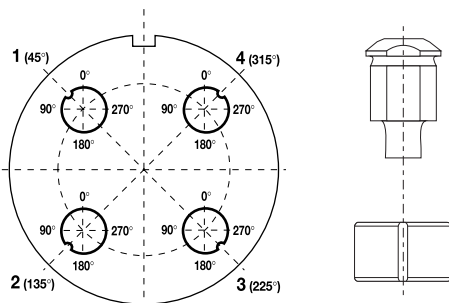


- All punches and dies will be made at 90 deg. Position 1
- Punch Max. Dia: 10.5mm

Description	Code
-------------	------

Punch Ass'y(w/o insert)	UN0.B1
Basic Body	GN9.K4
Toothed Wheel	GN9.K3
Adjusting Key	K.WDA-GPN
Dowel Pin	GN9.K2
Screw	K.N89.64Z
Dowel Pin	GN9.K1
Screw	K.N6.1Z
Lubrication Vale	K.BY-GPN
Punch Shank	GN9.K0
Die ass'y(w/o die insert)	UN0.C1
Die Holder	GN9.W0
Die Holder w/Brush	GN9.W1
Brush insert	K.NH1
Ball	K.TA-GPN
Screw	K.N3.1U
Stripper	UN0.T1
Pin	K.QC-GPH
Punch Insert	
Round	UN0.Q1.RO
Standard shape	UN0.Q1
Special shape	
Die	
Round	UN0.E1.RO
Standard shape	UN0.E1
Special shape	

# Multi-tool 4 STATION

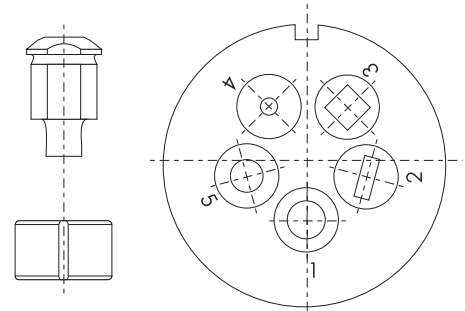


Description	Code
-------------	------

Punch Insert	
Round	UN4.Q1.RO
Standard shape	UN4.Q1
Special shape	
Die	
Round	UN4.E1.RO
Standard shape	UN4.E1
Special shape	

## Multi-tool 5 STATION

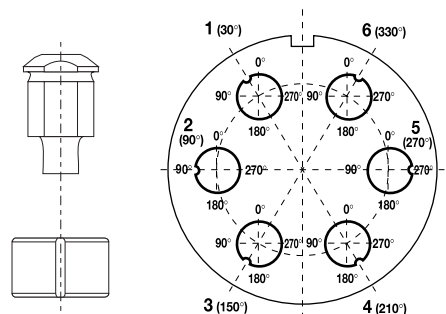
Description	Code
Punch Ass'y(w/o insert)	UN5.B1
Basic Body	GN4.K4
Toothed Wheel	GN4.K3
Adjusting Key	K.WDA-GPN
Dowel Pin	GN9.K2
Screw	K.N89.64Z
Dowel Pin	GN9.K1
Screw	K.N6.1Z
Lubrication Valve	K.BY-GPN
Punch Shank	GN4.K0
Die Ass'y(w/o die)	UN5.C1
Die Holder	GN4.W0
Ball	K.TA-GPN
Screw	K.N3.1U
Stripper	UN5.T1
Pin	K.QC-GPH
Punch Insert	
Round	UN5.Q1.RO
Standard shape	UN5.Q1
Special shape	
Die	
Round	UN5.E1.RO
Standard shape	UN5.E1
Special shape	



- All punches and dies will be made at 90 deg. Position 1
- Punch Max. Dia:16mm

## Multi-tool 6 STATION

Description	Code
Punch Insert	
Round	UN6.Q1.RO
Standard shape	UN6.Q1
Special shape	
Die	
Round	UN6.E1.RO
Standard shape	UN6.E1
Special shape	

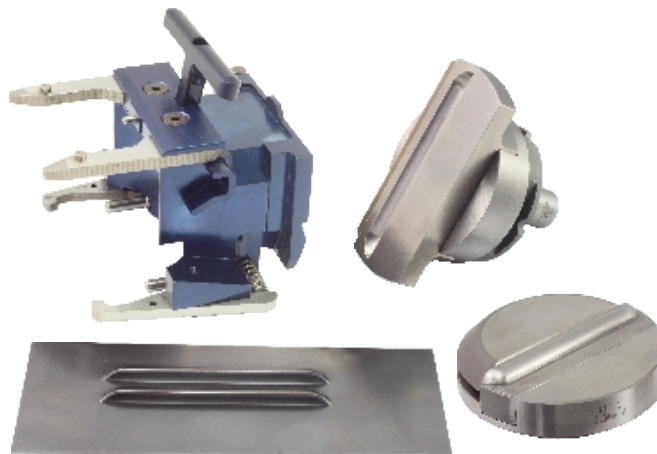


## FULLY GUIDED CUTTING TOOL



1. Special cutting tool with fully guided and enhanced design, longer tool life
2. Max length 28mm [1.10"], Width 1.0–1.5mm [0.04"~0.06"]
3. Max thickness: M.S sheet 1.5mm [0.06"]
4. Heavy Duty die, coating punch available
5. Recommended only for thin sheet metal

## SIZE 5 TOOLING



1. For Trumpf group I machine only
2. Max size for Louver: L100mm, W19mm, H6mm [L3.75", W0.75", H0.24"]
3. Max Thickness: Mild Steel 3.0mm [0.12"], Stainless Steel 2.0mm[0.08"]
4. Must setup with special size 5 cartridge
5. Size 5 tooling expand forming dimension to get longer and larger form  
Typical solution for Louver / Card Guide / Lance& Form



## FLAWLESS CUTTING TOOL

1. Perfect edge quality without nibbling marks
2. No need secondary operations of deburring
3. Punch size 5X76.2 mm [0.19 x 3.00"]
4. Sheet thickness: 0.5~3.0 mm [0.02"~0.12"]
5. Lower overall tooling costs with die blade

## WHEEL TOOLS



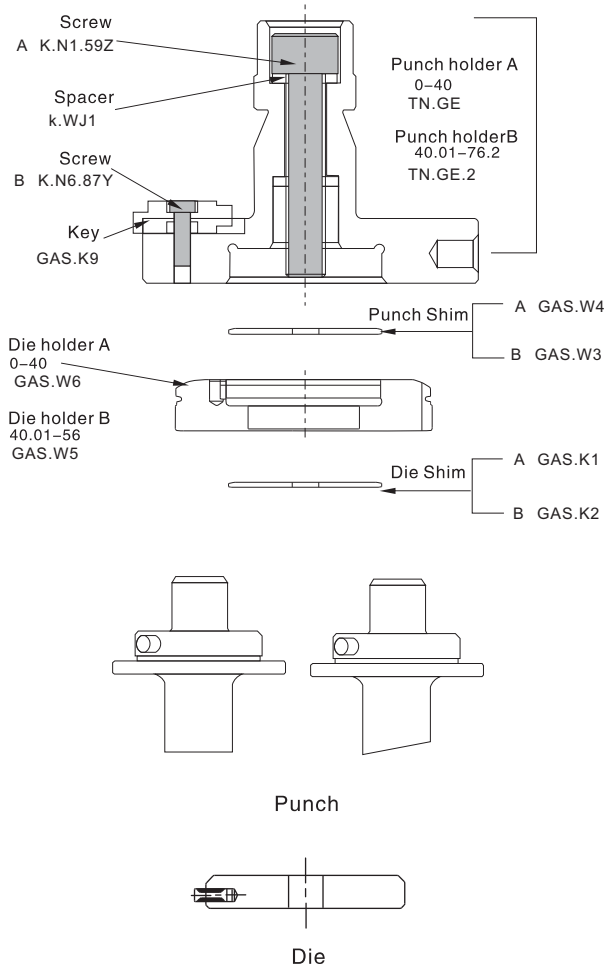
### WHEEL RIB

1. High speed, equal to table travel speed
2. Replaceable wheels, no nibble marks
3. Works under special control program
4. Thickness: 0.8–2.0mm [0.03"~0.08"]  
Height: 2~3T.
5. Width: 2H(4–6T). Max. Width: 12.7mm [0.5"]

### WHEEL OFFSET

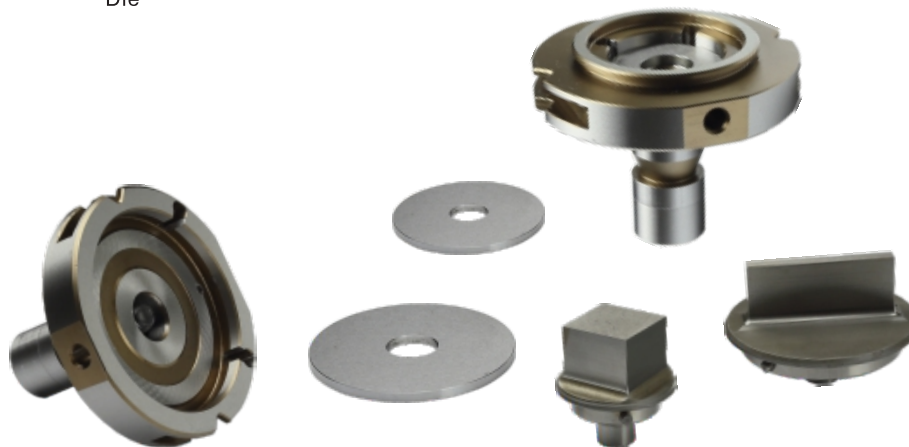
1. High speed, equal to table travel speed
2. Make any shape in auto index station
3. Replaceable wheels, no nibble marks
4. Works under special control program
5. Thickness:  
Stainless Steel 0.8–1.5mm [0.03"~0.06"]  
Mild Steel 0.8–2mm [0.03"~0.08"]  
AL 0.8~2.5mm [0.03"~0.10"]

# SFI-SERIES



Punch

Die



Description	Code
<b>Punch A1</b>	<b>0.77~30.00</b>
Round	UZI.Q1.RO
Standard shape	UZI.Q1
Special shape	
<b>Punch A2</b>	<b>30.01~40.00</b>
Round	UZI.Q2.RO
Standard shape	UZI.Q2
Special shape	
<b>Punch B1</b>	<b>40.01~56.00</b>
Round	UZI.Q3.RO
Standard shape	UZI.Q3
Special shape	
<b>Punch B2</b>	<b>56.01~66.00</b>
Round	UZI.Q4.RO
Standard shape	UZI.Q4
Special shape	
<b>Punch B3</b>	<b>66.01~76.20</b>
Round	UZI.Q5.RO
Standard shape	UZI.Q5
Special shape	
<b>Die A</b>	<b>(0.77~40)</b>
Round	GAS.W1IL.RO
Standard shape	GAS.W1IL
Special shape	
<b>Die B</b>	<b>(40.01~56)</b>
Round	GAS.W2IL.RO
Standard shape	GAS.W2IL
Special shape	



## QUICK-SET TOOL

Description	Code
Punch Holder (w/ring)	URE.Q9
Pin	GJW.K2
Key	PR/00953
Punch Blade A	URE.Q1.RE.5.00-30.00
Punch Blade B	URE.Q1.RE.5.00-30.00
Punch Blade B	URE.Q2.RE.5.00-56.00
Punch Blade B	URE.Q2.RE.5.00-76.20

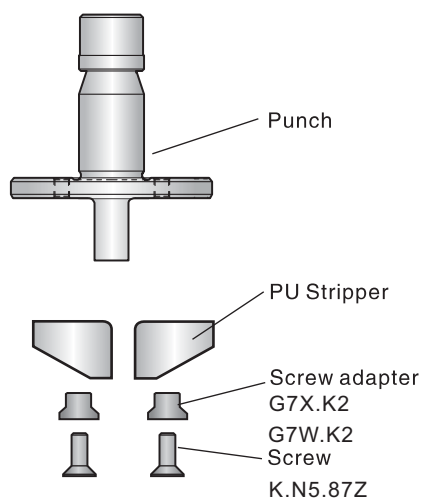
Description	Code
Die Holder A	URE.E6
Die Holder A w/bush	URE.E8
Die Holder B	URE.E7
Die Holder B w/bush	URE.E9
Screw	K.N5.83Z
Bush	K.NH1

Description	Code
Solid Blade A	URE.E1.RE.5.00-30.00
Slitting Blade A	URE.E2.RE.5.00-30.00
Solid Blade A	URE.E1.RE.5.00-56.00
Slitting Blade A	URE.E2.RE.5.00-56.00
Solid Blade B	URE.E3.RE.5.00-76.20
Slitting Blade B	URE.E4.RE.5.00-76.20

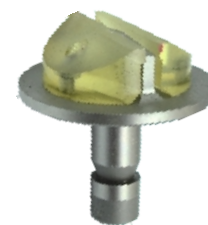
Note: Max. thickness 3.0mm [0.12"]; Grind life 1.0mm [0.04"]



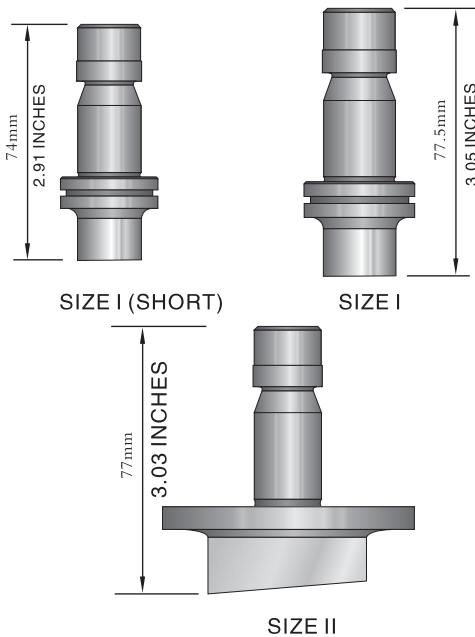
Description	Code
PU Blade	
SIZE II -2C	
Punch Ass'y	U2D.Q2.RE
Punch	U2D.Q9.OB.5.00-56.00-WHU
PU Stripper	U2D.Q8
SIZE II -2D	
Punch Ass'y	U3D.Q2.RE
Punch	U2D.Q9.RE
PU Stripper	U2E.Q8



## PU SLOTTING TOOL

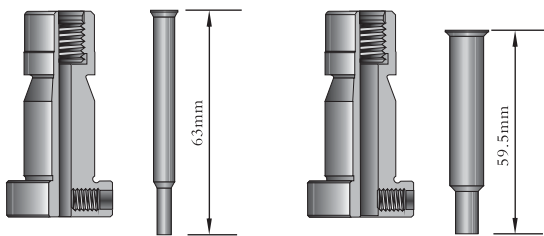


# PUNCH (SIZE I / SIZE II)



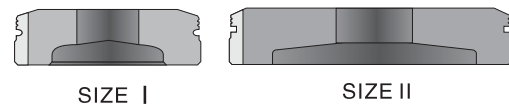
Description	Code
SIZE I	10.0~30.0mm [0.39"~1.18"]
Round (short)	U1Y.Q1S.RO
Standard shape(short)	U1Y.Q1S
Special shape(short)	
Round	U1Y.Q1.RO
Standard shape	U1Y.Q1
Special shape	
SIZE II -2A	30.01~40.0mm [1.19"~1.57"]
Round	U2B.Q1.RO
Standard shape	U2B.Q1
Special shape	
SIZE II -2B	40.01~50.80mm [1.58"~2.00"]
Round	U2C.Q1.RO
Standard shape	U2C.Q1
Special shape	
SIZE II -2C	50.81~60.0mm [2.00"~2.36"]
Round	U2D.Q1.RO
Standard shape	U2D.Q1
Special shape	
SIZE II -2D	60.01~76.2mm [2.36"~3.00"]
Round	U2E.Q1.RO
Standard shape	U2E.Q1
Special shape	

# PUNCH CHUCK (SIZE 0A / SIZE 0B)



Description	Code
SIZE 0A	0.77~6.0mm [0.03"~0.24"]
Punch Chunk	U0B.Q9
Punch Insert (short)	U0B.Q1T
Punch Insert	U0B.Q1
SIZE 0B	6.01~10.5mm [0.24"~0.41"]
Punch Chunk	U0C.Q9
Round (short)	U0C.Q1T.RO
Shape (short)	U0C.Q1T
Round	U0C.Q1.RO
Shape	U0C.Q1

# DIE



Description	Code
SIZE I	~32.00mm [~1.26"]
Round	U1Y.E1.RO
Standard shape	U1Y.E1.
Special shape	
SIZE II	32.01~76.20mm [1.26"~3.00"]
Round	U2Y.E1.RO
Standard shape	U2Y.E1
Special shape	

Description	Code
SIZE I	10.0~30.0mm [0.39"~1.18"]
Round	U1Y.Q2.RO
Standard shape	U1Y.Q2
Special shape	
SIZE II	30.01~42.0mm [1.19"~1.65"]
Round	U2Y.Q2.RO
Standard shape	U2Y.Q2
Special shape	

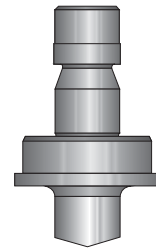
Description	Code
SIZE I	
Round	U1Y.E3.RO
Standard shape	U1Y.E3
Special shape	
SIZE II	
Round	U2Y.E3.RO
Standard shape	U2Y.E3
Special shape	

Description	Code
Round (Group H/1)	U1Y.T1.RO
Shape (Group H/1)	U1Y.T1
Round (Group E/F)	U1Y.T1.RO
Shape (Group E/F)	U1Y.T1
Pin	

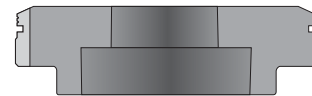
DIE SHIM	Code
SIZE I	
0.1mm [0.004"]	PH-00032
0.3mm [0.01"]	PH-00033
0.5mm [0.02"]	PH-00034
9 PCS/ PACK	
SIZE II	
0.1mm [0.004"]	PH-00035
0.3mm [0.01"]	PH-00036
0.5mm [0.02"]	PH-00037
9 PCS/PACK	

NOTE: Package with 9 pcs in 3 pcs each thickness

## HEAVY DUTY



Heavy Duty Punch



Heavy Duty Die

## STRIPPER



## DIE SHIM

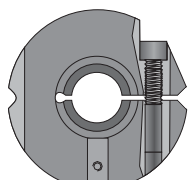


# CARTRIDGE & ACCESSORIES

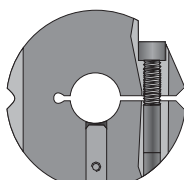
Description	Code
Trumpf Cartridge	K.EK.U1
Alignment Ring	U1Y.U1/U2Y.U1
Adaptor	U1Y.H1
Trumpf Die Plate	K.NI.U1



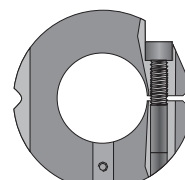
# ALIGNMENT RING



Size I Alignment Ring  
(E/F/G/H/1)



Size II Alignment Ring  
(E/F/G/H/1)



Alignment Ring(HD)

Description	Code
-------------	------

Alignment Ring	U1Y.U1
Key	G8C.G0
Screw	K.N3.64Z
Screw	K.N6.87Y

Description	Code
-------------	------

Alignment Ring	U2Y.U1
Key	G8C.G0
Screw	K.N3.64Z
Screw	K.N6.87Y

Description	Code
-------------	------

Alignment Ring	U3Y.U1
Key	G6C.G0
Screw	K.N3.74Z
Screw	K.N5.89Z

# C RING

Trumpf Machine	Code
2000, 2020	Q.XS-G
1000	Q.XS-G1000
3000	Q.XS-G3000

